

45.31
10.12
85.43
42.71

SHEET TWO

Providence R.I.
This plat accompanies
our report of this date

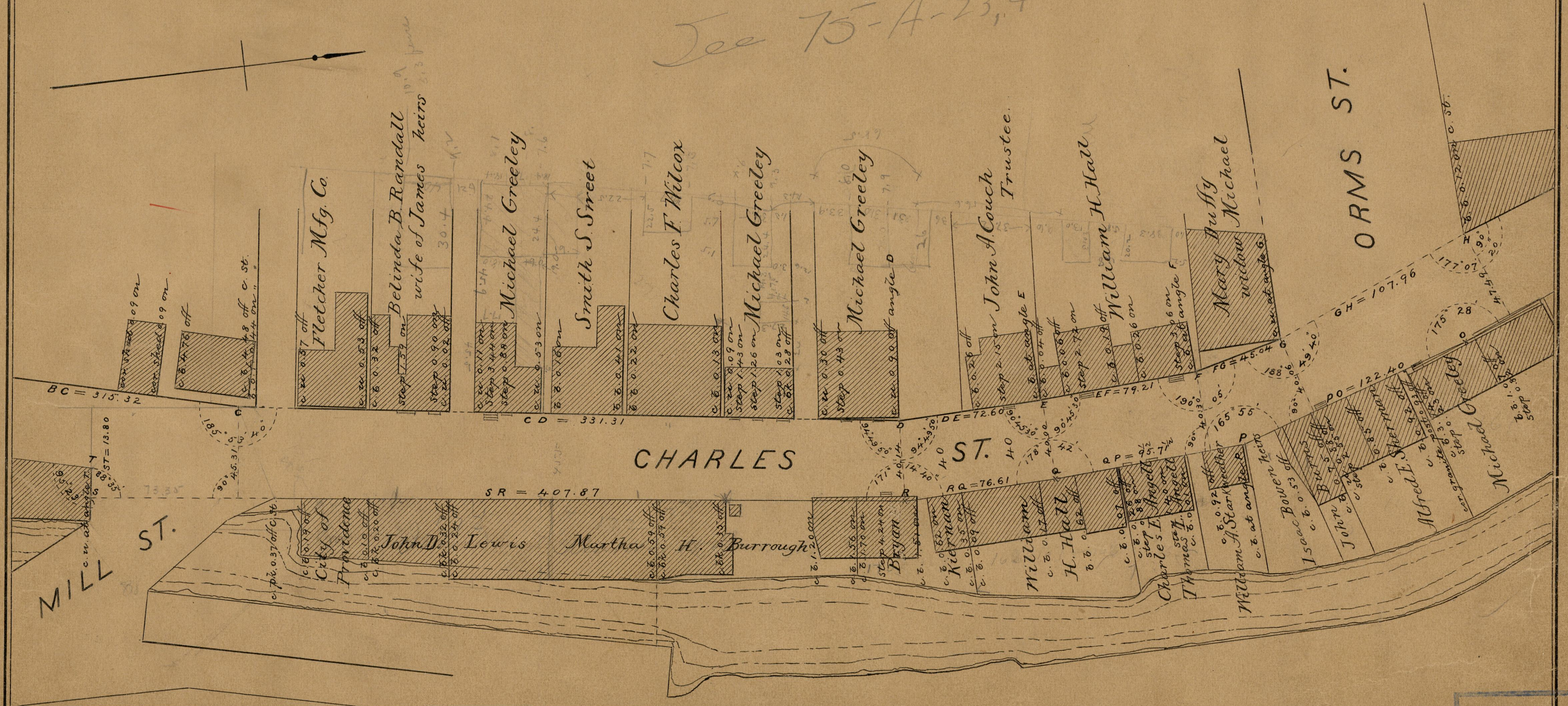
PROVIDENCE, R. I.
CITY ENGINEER'S OFFICE
STREET LINE DEPT.

Apr. 26, 1889

014969

PLAT OF
CHARLES STREET
FROM SMITH ST. TO RANDALL ST.
IN THREE SHEETS
SCALE 50 FEET PER INCH

See 75-A-23, 4



ORMS ST.

MILL ST.

CHARLES ST.

OFFICE NO.	10016
DRAWER	83
SHEET	B-86

83
B-86